

YI-LAI MARKETING SDN BHD (459342-W)

(Wholly Owned Subsidiaries of YB Ventures Berhad)

Office & Showroom In Malaysia:

Selangor

No. 8, Jalan 51A/241, Seksyen 51A, 46100 Petaling Jaya, Selangor
+603-7875 4388

Johor

No. 15 & 16, Jalan Tropika 1, Taman Tropika, 81000 Kulai, Johor
+607-663 7523

Melaka

No. 65, Jalan Suria 1, Taman Malim Jaya, 75250 Melaka
+606-336 7128

Penang

97-1-16, The Palazzia, Jalan Bukit Gambir, 11700 Gelugor, Pulau Pinang

Perak

No. 46A, Jalan Bendahara, 31650 Ipoh, Perak
+605-241 3729

YI-LAI TRADING PTE LTD (198204735-E)

Marketing Office In Singapore:

2 Sims Close #06-06 Gemini@Sims Singapore 387298
+65-6842 0163

SANO
PORCELAIN | MATTE



MODEL: YLH66SN01C
YLH63SN02C
YLH66SN02C

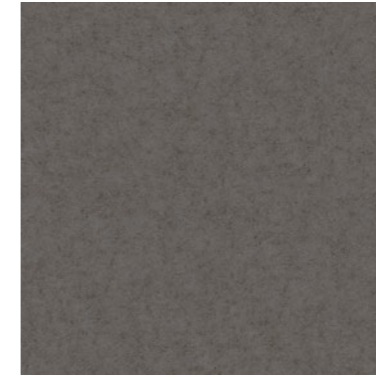


MODEL: YLH63SN01C
YLH66SN05C

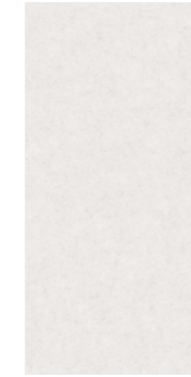
SAND



YLH63SN00C
300x600mm
Black



YLH66SN00C
600x600mm
Black



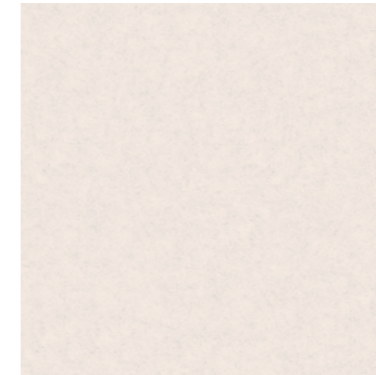
YLH63SN01C
300x600mm
White



YLH66SN01C
600x600mm
White



YLH63SN02C
300x600mm
Beige



YLH66SN02C
600x600mm
Beige



YLH63SN04C
300x600mm
Grey



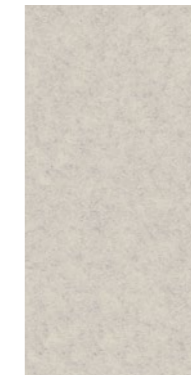
YLH66SN04C
600x600mm
Grey



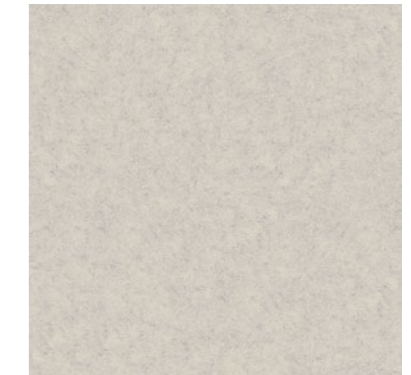
YLH63SN05DC
300x600mm
Dark olive



YLH66SN05DC
600x600mm
Dark olive



YLH63SN05LC
300x600mm
Light olive



YLH66SN05LC
600x600mm
Light olive

APPLICATION:



Wall



Floor



Indoors



Outdoors



Residential



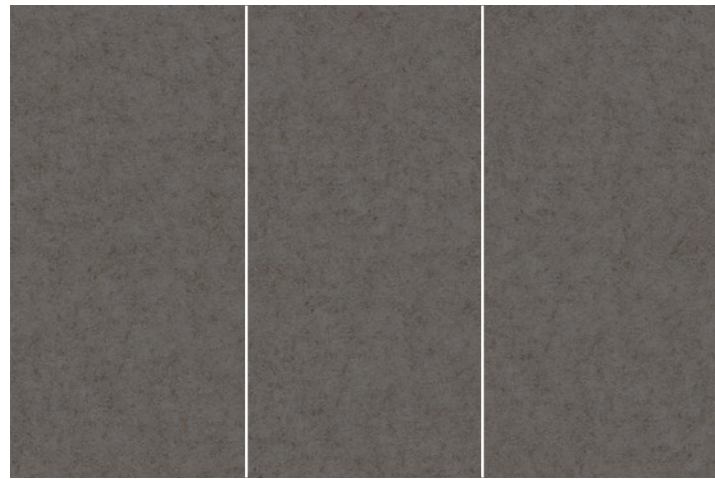
Commercial



Wet Area

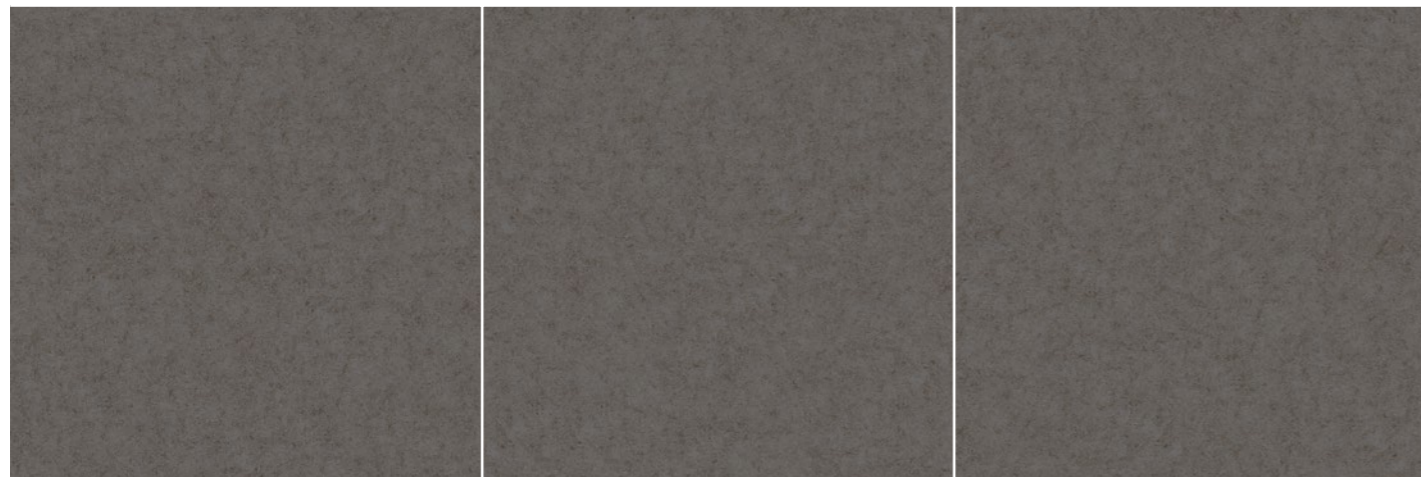


Dry Area



300x600mm Faces: 3 face

Tile Properties: Porcelain | Bla | V2
Physical Appearance: Matte | Rectified



600x600mm Faces: 3 face

Tile Properties: Porcelain | Bla | V2
Physical Appearance: Matte | Rectified

TECHNICAL SPECIFICATION FOR ALPHA PORCELAIN RECTIFIED TILE

Symbol	Test	Specification	
		MS ISO 13006: 2020	YLI
	Water Absorption(%)	E≤0.5%	E≤0.3%
	Dimension: Length & Width (for non-rectified tiles)	±0.60% (max±2.0mm)	±0.50% (max±2.0mm)
	Dimension: Length & Width (for rectified tiles)	±0.30% (max±1.0mm)	±0.25% (max±1.0mm)
	Thickness	±5.0% (max±0.5mm)	±4.0% (max±0.5mm)
	Straightness Of Side (mm) for non-rectified tiles	±0.50% (max±1.5mm)	±0.50% (max±1.5mm)
	Straightness Of Side (mm) for rectified tiles	±0.30% (max±0.8mm)	±0.30% (max±0.8mm)
	Rectangularity (mm) for non-rectified tiles	±0.50% (max±2.0mm)	±0.50% (max±2.0mm)
	Rectangularity (mm) for rectified tiles	±0.30% (max±1.5mm)	±0.30% (max±1.5mm)
	a) Centre Curvature for non-rectified tiles	±0.50% (max±2.0mm)	±0.50% (max±2.0mm)
	a) Centre Curvature for rectified tiles	±0.40% (max±1.8mm)	±0.40% (max±1.8mm)
	b) Edge Curvature for non-rectified tiles	±0.50% (max±2.0mm)	±0.50% (max±2.0mm)
	b) Edge Curvature for rectified tiles	±0.50% (max±2.0mm)	±0.50% (max±2.0mm)
	c) Edge Curvature for non-rectified tiles	±0.40% (max±1.8mm)	±0.40% (max±1.8mm)
	c) Edge Curvature for rectified tiles	±0.50% (max±2.0mm)	±0.50% (max±2.0mm)
	Surface Quality*	±0.40% (max±1.8mm)	±0.40% (max±1.8mm)
	Modulus Of Rupture	Min 35 N/mm ²	Min 35 N/mm ²
	Scratch (Moh's Hardness Scale)	Min 6	Comply
	Abrasion Resistance (PEI)	Class I ~ IV	Comply
	Chemical Resistance To		
	a) Acid	GLA ~ GLC	Comply
	b) Alkaline	GLA ~ GLC	Comply
	Chemical Resistance To Stain	Min Class 3	Min Class 3
	Crazing Test	No Crazing	No Crazing (3 times)

* Free from visible defect

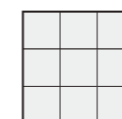
ALPHA PACKAGING SPECIFICATION

DIMENSION	CARTON			PALLET			CONTAINER			
	Pieces	Weight(kg)	Sq.Meter	Cartons	Weight(kg)	Sq.Meter	Cartons	Pallets	Sq.Meter	Gross Weight(kg)
600x600mm	4	32.0	1.44	40	1305	57.60	640	17	979.20	20880
300x600mm	8	29.3	1.44	40	1197	57.60	720	18	1036.80	21546

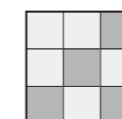
Remarks:

The "kg/pallet" is included 25kg pallet weight | Bla=<0.5% water absorption | B1b=>0.5 to <3% water absorption

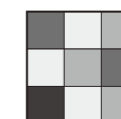
SHADE & TONE VARIATIONS



V1
UNIFORM
SHADE & TONE



V2
SLIGHT
VARIATION



V3
MEDIUM
VARIATION



V4
STRONG
VARIATION